

PASSION



PASSITON





## Dear Friends,

The Yampa Valley Community Foundation is a community in and of itself. It is a community of people sharing their stories and lives with one another, guests and visitors, businesses and organizations. It is a diverse group with many perspectives, ideas, imaginations and desires. The individuals and organizations that make up the Community Foundation are passionate about how they live, learn, play and work. The PASSION of each community member may be diverse, but together they share a common goal to PASS IT ON and make a difference in the Yampa Valley.

Since inception, through the help of many donors, we have given over \$12.5 million in grants from more than 148 funds, meant to enrich and benefit the lives of our community members and beyond. In spite of market fluctuations, our assets continue to trend upward as well, and donor support is a large part of that success.

As we celebrate our accomplishments and look to the future, we recognize our key partners and stakeholders who make our mission possible. We extend our deepest appreciation to the Steamboat Ski & Resort Corporation for their continued support of YVCF through the Passport Club. Proceeds from this program generously make grants to the community and support the operations of our organization. We remain your trusted resource, and appreciate your partnership as we look to support and strengthen the people and places that define us.

Sincerely,

Adonna Allen  
*Board Chair*

Mark D. Andersen  
*Executive Director*





# BOARD OF TRUSTEES

*The Community Foundation receives gifts in many forms. Among the most precious gifts are time, knowledge, skills, and hard work donated by our volunteer trustees.*

## FY 2015 Board of Trustees

### **Adonna Allen, Chair**

Bank President, Alpine Bank

### **Jim Bronner, Vice Chair**

Community Volunteer

### **Laura Cusenbary, Vice Chair**

Financial Advisor, Wells Fargo  
Assistant Vice President - Investments

### **Dana Tredway, Secretary/Treasurer**

CPA, Tredway, Henion and Kerr

### **Paula Cooper Black, Emeritus**

Community Volunteer

### **Jay Fetcher**

Rancher

### **Rod Hanna**

President / CEO, Sidney Peak

### **Ron Krall**

Owner, Off the Beaten Path Bookstore

### **Gary Neale**

Retired CEO of a Fortune 500 energy company

### **Kathryn Pedersen**

Fidelity Mortgage / Affiliate Partnership

### **Rob Perlman**

President, Steamboat Ski & Resort Corporation

### **Tom Sharp**

Community Volunteer

### **Karina Spitzley**

Legal Research Attorney,  
14<sup>th</sup> Judicial District, State of Colorado

### **Pam Vanatta**

Owner Broker,  
Steamboat Sotheby's International Realty

### **Craig Wasserman**

Community Volunteer

### **Pam Williams**

Rancher

Connecting People Who Care with Causes That Matter

## HOW TO GIVE

970.879.8632 | [yvcf.org](http://yvcf.org) | [info@yvcf.org](mailto:info@yvcf.org)





# Experts in Local Philanthropy

## What is a Community Foundation?

Community foundations are tax-exempt public charities serving people who share a common interest: improving the quality of life in their area. Individuals, families, businesses, and organizations create permanent charitable funds that help their region meet the challenges of changing times. The foundation invests and administers these funds. All community foundations are overseen by a volunteer board of leading citizens and run by professionals with expertise in identifying their community's needs.

## Why invest in a community foundation?

There are many reasons to invest in your local community foundation. Community foundations go beyond simply making grants that advance charitable activities. They also identify current and emerging issues, channel resources to address their communities' needs, and help their regions prepare for the future. YVCF understands the needs of the Yampa Valley. The staff works closely with local nonprofits to improve community life and recommends where donors can make gifts that will have the most impact. Through partnership with YVCF, you will be positioned to pass your passion on for future generations.

## Community Foundation National Standards Compliance

The National Standards for U.S. Community Foundations® (National Standards) is an accreditation program created by community foundations for community foundations. They are peer-driven, voluntary, and self-regulatory. The Yampa Valley Community Foundation has met National Standards since 2006. The program requires YVCF to document our policies for donor services, investments, grant making and administration, all of which are available to the public. The National Standards has established legal, ethical and effective practices that increases donors' comfort level when establishing a fund at the Community Foundation.



# QUICK FACTS



**Proudly Serving:**  
Moffat & Routt Counties



**\$12.5+ Million**

gifted to the local  
community to date



**\$12.9+ Million**

total combined assets



**\$172,000**

total FY2014  
community grants

## Scholarships Granted:

Increasing with your  
continued support

FY2014 Scholarship Awards - \$126,500

FY2015 Scholarship Awards - \$160,300

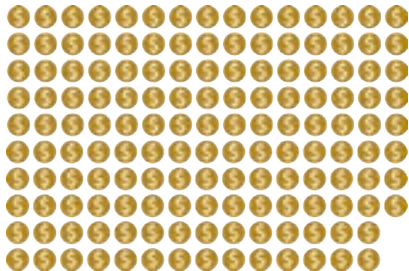
\$50,000

\$100,000

\$150,000

\$200,000

## Charitable Funds: 148



**Executive Director**  
**Mark D. Andersen**

**Board of Trustees:**  
**16 Members**



**Susan Petersen**  
Community Impact  
Manager



**Helen Brown**  
Office Manager



**Emily Conjura**  
Finance Director



**Hannah O'Neill**  
Americorps Vista  
NW Regional Coordinator

**Location:** 385 Anglers Drive, Suite B, Steamboat Springs CO | Open M-F • 8:30am-4:30pm

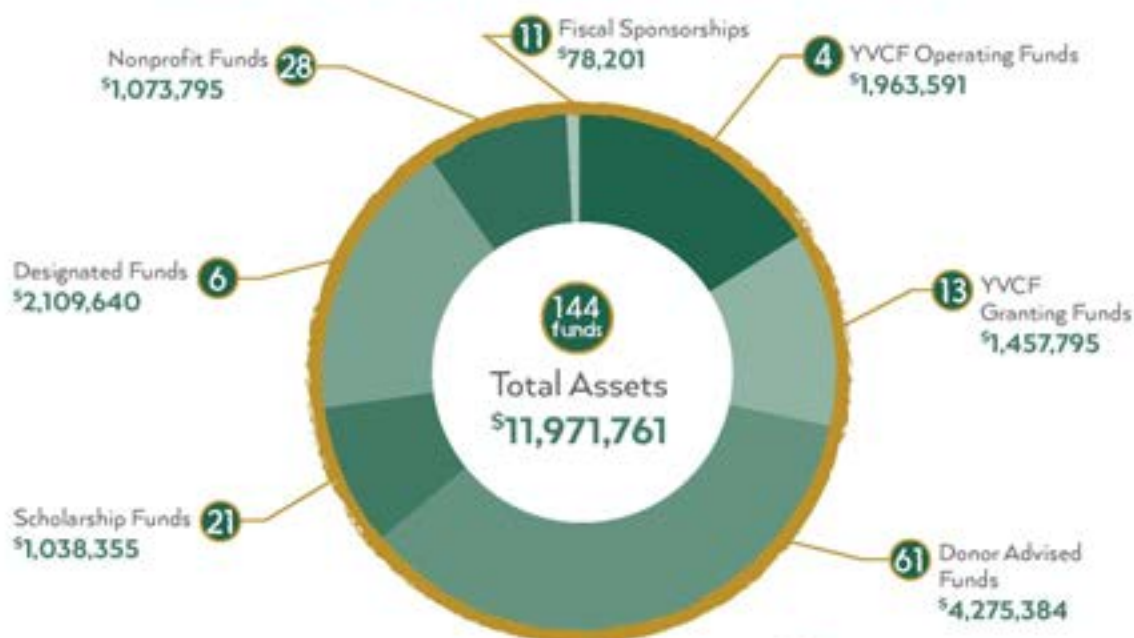
Connecting People Who Care with Causes That Matter

## HOW TO GIVE

970.879.8632 | [yvcf.org](http://yvcf.org) | [info@yvcf.org](mailto:info@yvcf.org)



## Asset Overview - December 31, 2014



# 2014 FINANCIALS



## 2014 Audited Financial Statement

### Assets

Cash and Cash Equivalents .....	\$590,087
Investments .....	\$11,361,484
Bequest Receivable .....	\$1,200,000
Prepaid Expenses .....	\$3,739
Pledges .....	\$25
Fixed Assets less Accumulated Depreciation.....	\$11,645
Other Assets .....	\$13,434
<b>Total Assets.....</b>	<b>\$13,180,414</b>

### Liabilities and Net Assets

Accounts Payable and Accrued Expenses .....	\$13,551
Funds Held for Other Agencies.....	\$1,733,015
<b>Total Liabilities.....</b>	<b>\$1,746,566</b>
Temporarily Restricted Assets.....	\$1,793,520
Unrestricted Net Assets.....	\$9,640,328
<b>Total Net Assets .....</b>	<b>\$11,433,848</b>
<b>Total Liabilities and Net Assets .....</b>	<b>\$13,180,414</b>

### Revenue and Support

Contributions.....	\$2,927,681
Passport Club Program (Net).....	\$392,920
Increase in Value of Invested Assets.....	\$483,829
Interest and Dividends .....	\$226,244
Total Revenue and Support.....	\$4,030,674
Less Agency Income .....	(\$398,606)
<b>Revenue Available for Programs &amp; Services.....</b>	<b>\$3,632,068</b>

### Programs and Services

Grants Awarded .....	\$743,226
Agency Disbursements.....	\$105,509
Supporting Services .....	\$357,865
<b>Total Expenditures.....</b>	<b>\$1,206,600</b>
Less Agency Expenses.....	(\$369,314)
<b>Expenses for Programs and Services.....</b>	<b>\$837,286</b>
<b>Change in Net Assets .....</b>	<b>\$2,794,782</b>

Connecting People Who Care with Causes That Matter

HOW TO GIVE

970.879.8632 | [yvcf.org](http://yvcf.org) | [info@yvcf.org](mailto:info@yvcf.org)





## Mission Statement

The Yampa Valley Community Foundation provides leadership in raising funds, in partnership with community members, to support innovative programs benefiting the Yampa Valley community.



## Vision

Building a healthy and vital community through the power of philanthropy.



## Values

Integrity | Community | Creativity | Competence | Wisdom



## Who We Are

The Yampa Valley Community Foundation is the primary source for philanthropic resources and education for both donors and nonprofit organizations in Northwest Colorado. We promote thoughtful, individualized charitable giving and create endowments that have meaningful impact in the Yampa Valley.

In all that we do, the Yampa Valley Community Foundation operates with the highest integrity. We are the gold standard in client services and a trusted resource to the community. Our work is impeccable, impactful and transparent to those we serve.





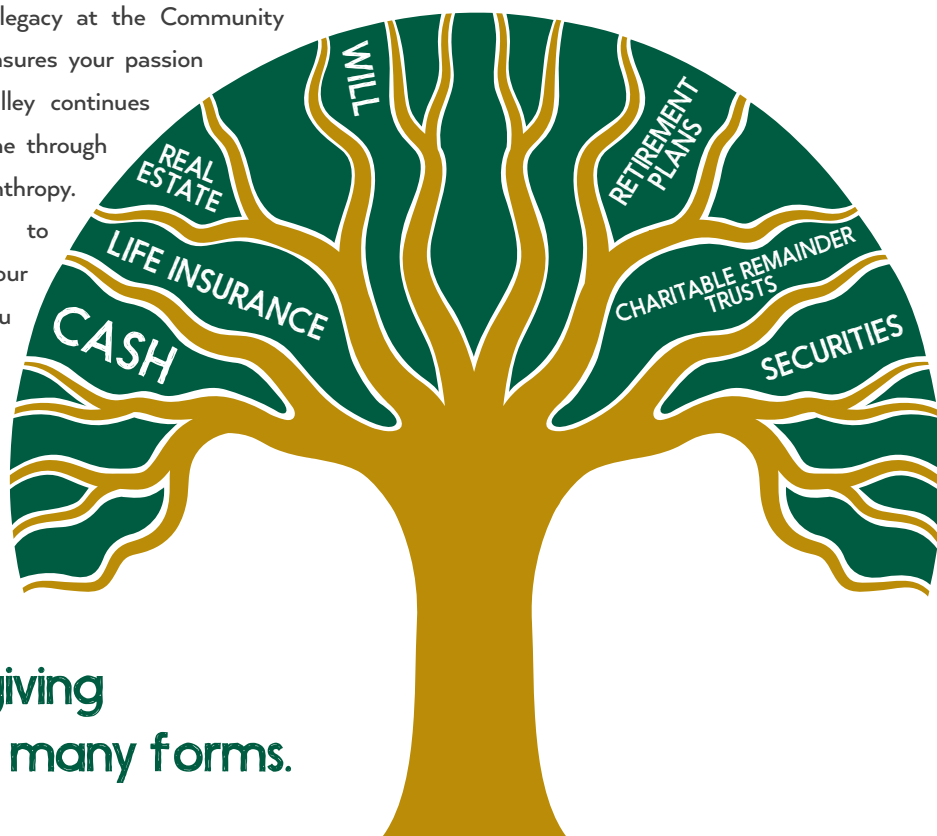


## Your passion can live on in the Yampa Valley

The Yampa Valley Community Foundation partners with donors to extend their charitable giving beyond their lifetimes. Through gift planning, YVCF will administer these future contributions to the community in accordance with the donors' charitable intentions. Legacy gifts can enable local nonprofit organizations to achieve long-term financial stability and may also provide significant tax advantages to the donor.

### Endowments:

You can create a legacy at the Community Foundation that ensures your passion for the Yampa Valley continues beyond your lifetime through the power of philanthropy. We would love to assist you with your legacy giving as you support achieving community goals.



**Legacy giving  
can take many forms.**

HOW TO GIVE

970.879.8632 | [yvcf.org](http://yvcf.org) | [info@yvcf.org](mailto:info@yvcf.org)



# OUR DONORS CARE

## We know you want to do good

...and do it well, beyond random acts of kindness. Donors in our communities are as varied as the Yampa Valley organizations we serve. We guide individuals, families, businesses, community groups and organizations with all sizes of charitable resources at their disposal. Whether this is your entry into civic giving or you are seeking to increase the strategic impact of your charitable portfolio, the Yampa Valley Community Foundation offers the information and options you need. Since 1984, we have served as the bridge between donors and their passion.

### Here's how we work with you:

#### A PERSONAL CONNECTION:

##### One-On-One Meetings

Our expert staff welcomes the opportunity to meet with you individually. We can answer your questions on effective giving approaches and suitable grant-making strategies. In the process of getting to know you, we become familiar with your specific reasons and goals for supporting your community.

#### CONNECT TO A CAUSE:

##### Research & Analysis

From programs in the arts and literacy, to health and human resources and environmental protection, there is an abundance of worthy recipients seeking assistance from the Community Foundation's funds. Our knowledgeable staff helps you connect to the causes that matter most to you.

#### PASS IT ON:

##### Establish A Fund

In creating a fund with the Yampa Valley Community Foundation, you can shape an easy, effective and powerful way to impact our communities—today and for generations to come. We are proud to be your partner in philanthropy.

## HOW TO GIVE

970.879.8632 | [yvcf.org](http://yvcf.org) | [info@yvcf.org](mailto:info@yvcf.org)

# ESTABLISH A FUND

**It's never been easier  
or more personal.**

**The extent of your involvement is entirely up to you.**

**We offer donors:**



## **Flexibility & Focus**

You advise on how, when and where to spend the money. The Community Foundation staff helps you transform your wishes for the valley into action.



## **Reliability**

Charitable funds are invested and professionally managed in a large and diversified portfolio.



## **Financial Stewardship**

We help you achieve maximum tax advantages and work with your financial planners and attorneys to incorporate giving into your plans.



## **Support & Leadership**

Our professional staff are your ongoing partners in realizing your charitable interests.

# FUND TYPES

## A fund for everyone.

### Community Grants Fund

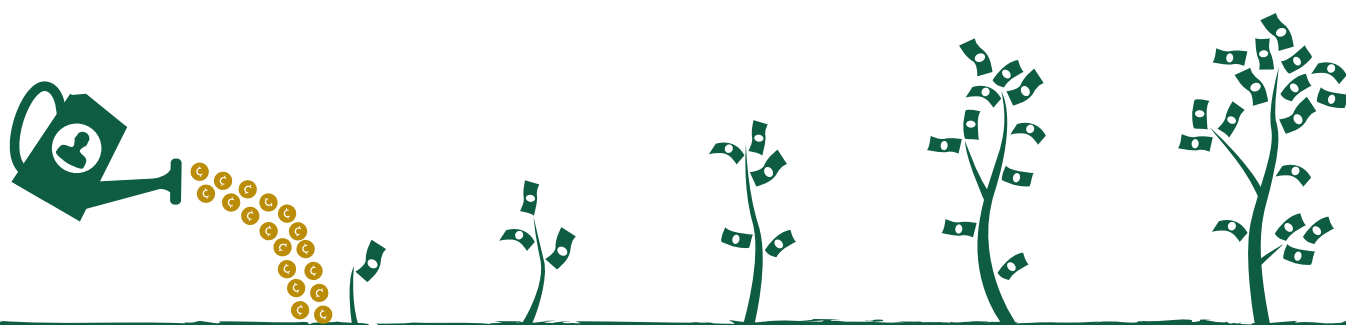
With these specialized funds, you can support organizations and programs that satisfy your personal interests. The Community Foundation has endowments supporting our five areas of interests: Arts & Culture, Education, Environment, Health & Human Services and Recreation.

### Designated Fund

Created to ensure that support will be provided to one or more specific charitable organizations chosen by you. Designated funds often are endowed in perpetuity with the income used to support the organizations on an ongoing basis. If an agency stops functioning as an exempt charity or ceases to exist, the YVCF Board may select an alternative charity as indicated in the fund agreement.

### Donor Advised Fund

This fund is a flexible tool for charitable giving. You contribute to the fund when it is most convenient and recommend grants over time to nonprofit organizations of your choice. You select a fund name and enjoy recommending grants to nonprofit organizations that are committed to the causes you care about. You also can involve your children, creating a family tradition of giving. Funds may be endowed or non-endowed.



HOW TO GIVE

970.879.8632 | [yvcf.org](http://yvcf.org) | [info@yvcf.org](mailto:info@yvcf.org)





# There's a fund for that.

## Organizational Fund

Nonprofit organizations may place their endowed funds at the Community Foundation through an Organizational Fund, thus assuring their donors that funds earmarked for the future will be invested wisely and used appropriately. The Community Foundation manages the fund as part of its investments and can distribute annual payments to the organization.

## Scholarship Fund

Support YVCF's scholarship program and bring together students in need and individuals who care about education. Scholarships, which enable more students to reach their educational goals, may be directed to a specific school or to a field of study.

## YVCF Trustee Operating Endowment

The Operating Endowment increases YVCF's long-term capacity to serve donors, nonprofits and the Yampa Valley. By growing our endowment, we seek to secure our organization's future in the valley.



# TYPES OF GIFTS

## Ways to give:

Once you have decided what giving program fits your needs, you may choose a giving vehicle. Each donor has unique financial circumstances, and we will work with you and your financial advisor to identify the best option for you.



### Cash

This is the easiest way to contribute, whether by check, credit card or actual cash. Donors who make gifts of cash are eligible for a charitable deduction in the year the gift is made.



### Publicly-Traded Stocks & Mutual Funds

Stocks and some mutual funds are eligible for donation and can provide a charitable deduction for their fair market value. By donating appreciated securities to the Community Foundation, you can avoid capital gains taxes that might otherwise occur at the sale of the stock.



### Bequest

Include the Community Foundation in your will. A bequest can take the form of a specific item (such as a home), a specific amount of money, or a portion of your estate.



## Charitable Remainder Trusts

Through Charitable Remainder Trusts you can place cash or property in a trust that makes payments to you and/or a loved one for life. You receive income tax benefits the year you establish your trust. After your death, the remainder of the trust transfers to the Community Foundation and is placed into a charitable fund you have selected.



## Charitable Lead Trust

Place cash or property into a trust that makes payments to the Community Foundation for the number of years you select. Once this period ends, the assets held by the trust are transferred to the beneficiaries you name.



## Personal Assets

There are several methods to give through personal assets. You can name the Community Foundation as the beneficiary of a life insurance policy, IRA or other retirement asset.

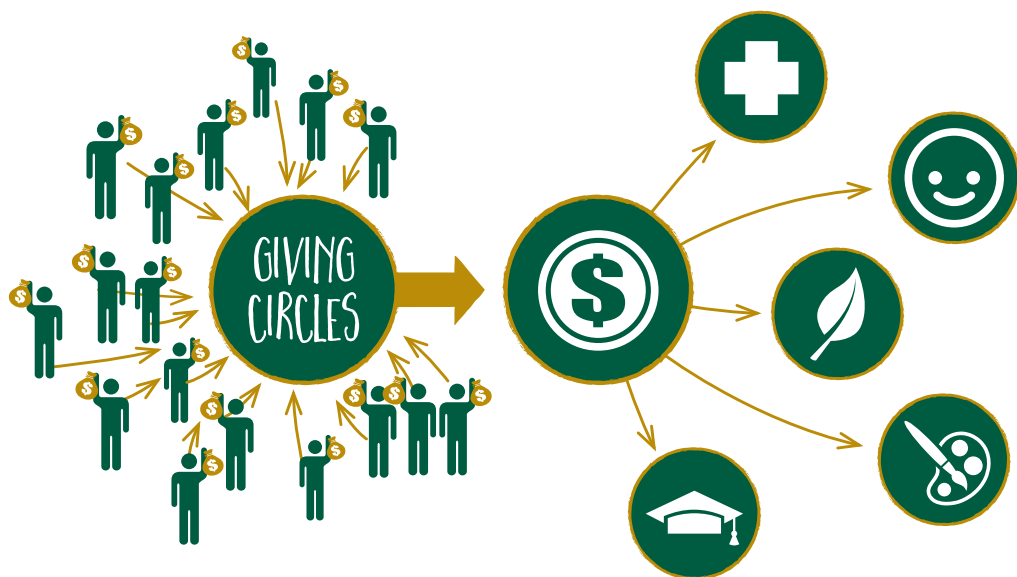


## Real Estate

You may choose to give residential or commercial real estate or undeveloped land and receive an immediate tax deduction. Contact us to discuss the various options that can benefit you and the Yampa Valley.



## Your Giving – Magnified



### What is a Giving Circle?

A Giving Circle is a group of passionate people who come together, pooling tax-deductible charitable donations and make collective decisions about where to grant their money within the community. Giving Circles offer members a chance to learn more about giving and community issues in an active, team approach to philanthropy. The Yampa Valley Community Foundation provides all administrative and financial services to each Giving Circle.

### Current giving circle funds include:

IMPACT 100 • Turkey Bowl • Women Who Wine  
Women's Giving Circle • WZ Giving Circle







# IMPACT 100

Over the past nine years IMPACT 100 has raised over \$102,150 supporting 35 different local nonprofit organizations. IMPACT 100 started when members of the Board of Trustees of YVCF sought to attract a young, dynamic section of the community to charitable giving. The concept is simple: 100 people donate \$100, and collectively make an impact with a grant of \$10,000. Since 2006, members attend four social events each year, held at members' homes or local venues. At each year's fall kickoff members select four local nonprofits to learn more about in the coming year. At the next two events, representatives of the nonprofits give a short presentation on their programs. At the final spring event, IMPACT 100 members vote, and the money is granted to the selected organizations.



"I remember the nonprofits that presented that night both brought me to tears..."

## Maren McCutchan IMPACT 100 Member

**YVCF:** Why did you get involved with IMPACT 100?

**Maren McCutchan:** I got invited to attend IMPACT 100 by my co-workers when I first started working at the Chamber. It became a great way to get to know other young professionals as well as various business people in Steamboat.

**YVCF:** What is your most memorable moment from the 2014/15 season?

**Maren:** The bacon themed night at the Depot. The food was unbelievable, the Depot had such a fun atmosphere, and I remember the nonprofits that presented that night both brought me to tears—Routt County Humane Society and Northwest Colorado Center for Independence.

**YVCF:** Describe what IMPACT 100 means to you.

**Maren:** IMPACT 100 has provided me a heartfelt connection with our community and taught me a lot about the amazing nonprofits that we have in Routt County. I think it is a great program because it brings together people from all walks of life and professions.

Connecting People Who Care with Causes That Matter

## HOW TO GIVE

970.879.8632 | [yvcf.org](http://yvcf.org) | [info@yvcf.org](mailto:info@yvcf.org)



## Strengthening Yampa Valley Nonprofits

A vital nonprofit sector is essential to the Yampa Valley. Since 1984, the Yampa Valley Community Foundation has provided high impact services that link individuals to nonprofits and strengthen both the governance and the leadership capacity of our region's nonprofit sector. The Community Foundation supports local nonprofits in the following ways:

### Endowments

Nonprofits can establish an endowment fund that will provide financial resources for the future of their organization. Endowment funds are professionally managed and pooled for long-term investment.

### Funding Information Network

The Community Foundation houses the Funding Information Network – a free lending and resource library and a powerful grant database. Use of this resource assists nonprofits to obtain information regarding additional funding from a wide variety of sources.

### Workshops and Seminars

YVCF hosts workshops and seminars on various subjects throughout the year to increase nonprofit management knowledge and success.

### Grants

The Community Foundation offers the Community Grant cycle for local nonprofits to request funds. Grant proposals are reviewed by our Grants Committee, comprised of YVCF Board Members and community volunteers. Grants are awarded for innovative projects and programs that demonstrate progress towards achieving community goals.



# 2015 GRANT CYCLE

**\$190,757 Granted**   
in the 2015 Community Grant Cycle

**51**

**A total of 51 grant recipients in 2015**

Health  
& Human  
Services



**38%**

Recreation



**16%**

Environment



**8%**

Arts & Culture



**15%**

Education



**23%**



**Steamboat**  
SKI & RESORT CORPORATION

+

**YAMPA VALLEY**  
COMMUNITY FOUNDATION  
Passport Club

**\$385,503**

was given in 2015 to support YVCF and local nonprofits by Steamboat Ski & Resort Corporation via the Passport Club

## Fund sources for the 2015 Community Grant Cycle

Donor Advised Funds

**\$48,500**

Steamboat Ski & Resort Corporation

**\$61,500**

Yampa Valley Community Foundation

**\$80,757**

Grants made possible by Yampa Valley Community Foundation, Donor Advisors, The Gloria Gossard Memorial Endowment, The Arthur Anderson Memorial Endowment and Steamboat Ski & Resort Corporation.

Connecting People Who Care with Causes That Matter

**HOW TO GIVE**

970.879.8632 | [yvcf.org](http://yvcf.org) | [info@yvcf.org](mailto:info@yvcf.org)



## A Passion for Skiing - Passed On to the Community

For the past 20 years the Steamboat Ski & Resort Corporation (SSRC) has generously donated 80 ski medallions each winter to the Community Foundation's Passport Club. Funds generated from the Passport Club support both SSRC's contributions to the community and the operations of the Community Foundation. A Passport Club Membership is a great way to strengthen our community through philanthropy and enjoy the benefits that the Steamboat Ski Area provides.



### Passport Club Dollars in Action

**\$385,503** was given in 2015 by Steamboat Ski & Resort Corporation via the Passport Club to support YVCF and local nonprofits. REPS (Reaching Everyone Preventing Suicide) is one of many organizations that saw support from this program. Meghan Francone, Executive Director of REPS, explains how the Passport Club supports her vital mission.

**YVCF:** Tell me how you first got involved with REPS?

**Meghan Francone:** I volunteered with REPS for about 5 years, after I lost my brother to suicide in Moffat County. He was a freshman in high school. I took over the role of executive director over a year ago.

**YVCF:** What do you wish other people knew about REPS?

**Meghan:** So much! We are a growing nonprofit that covers all aspects of suicide prevention. Please visit our website to learn more: [preservinglife.org](http://preservinglife.org)

**YVCF:** How are grant dollars from the Community Foundation used to further the REPS mission?

**Meghan:** This grant will support our QPR program and training. QPR stands for Question, Persuade, and Refer - 3 simple steps that anyone can learn to help save a life. Each year, people trained in QPR learn how to recognize the warning signs of a suicide crisis and how to question, persuade, and refer someone to help.





# CLUB ANNIVERSARIES

## Passport Club Member:

### 20+ Years:

Russ and Shine Atha  
B & K Distributing, Inc.  
Bear Claw Condominiums  
Paula Cooper Black  
Tim and Janet Borden  
Kyle and Elyse Craig  
Beth Findell Horner  
Family of Martin T. Hart  
Chris and Suzi Nyby  
Betsy Searle  
Steamboat Pilot & Today  
Steamboat Resorts

### 15+ Years:

Linda Hamlet\*  
Scotty Searle  
Rick Erb and Diane Nielsen  
Chapman and Kendall Geer  
Vernon and Naomi Taylor  
Susan and Jim Larson  
William Bensler Family  
Jerry and Kathy Craig  
Hank and DJ Edwards  
Terry Huffington and Ralph Dittman  
Alfred and Susan Kahn  
Jim Kelley and Amie Knox  
Bill and Toni Thomson

### 10+ Years:

Peggy Berglund  
Matthew and Anne Hamilton  
Judy Odom  
John Smith and Gail Ward  
Alvin and June Wolff  
Michael and Sara Craig-Scheckman  
John and Leslie Dorman  
Jeanine Keating  
Verne and Nancy Lundquist\*  
Jim and Wendy McCreight  
Isabel V. Sawhill  
Michael and Carol Staenberg  
Dorian Welch and Laurie Erb  
Jeff and Jean Wolf  
Boyd Bass and Barbara Winternitz  
David and Beth Foster  
Bruce and Jane Hannon  
Lester Kaplan and Susan Shattuck



For Information about  
joining the Passport Club  
call **970.879.8632**  
or email **info@yvcf.org**

## Black Diamond Membership:

SSRC generously tailored benefits for up to five members who are not using the regular benefits of the Passport Club but can share some benefits with family and friends. These families still wish to support YVCF, and the nonprofits receive grants through their Passport Club Membership.

\* = Black Diamond Member

## HOW TO GIVE

970.879.8632 | [yvcf.org](http://yvcf.org) | [info@yvcf.org](mailto:info@yvcf.org)

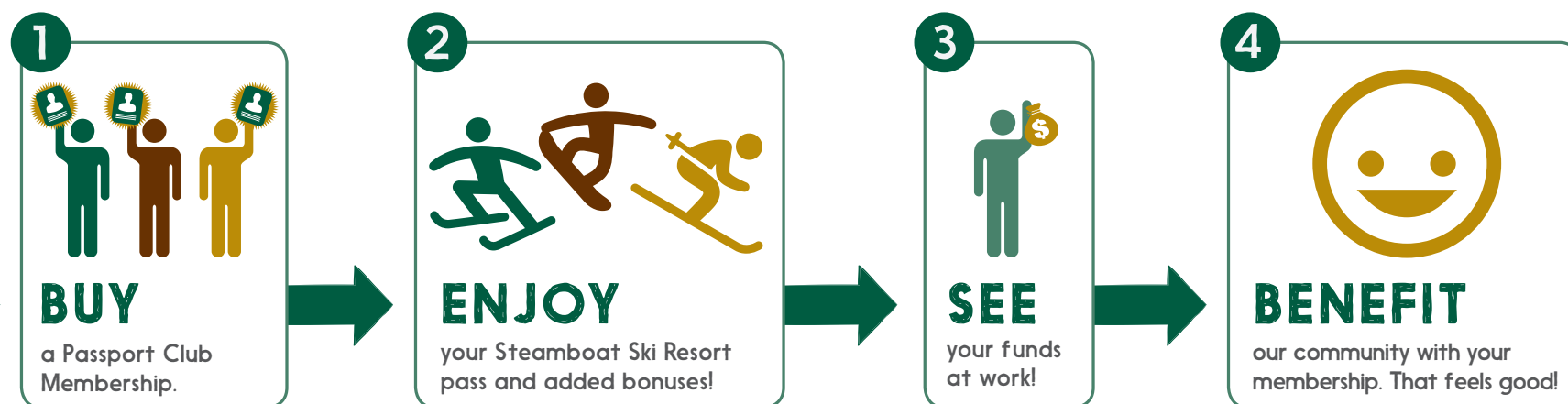
# HOW DOES THE PASSPORT CLUB WORK?



**\$385,503**

was given in 2015 to support YVCF and local nonprofits by Steamboat Ski & Resort Corporation via the Passport Club

## Here's how Passport Club works:



**Call 970.879.8632** to join now! Memberships may still be available this season.



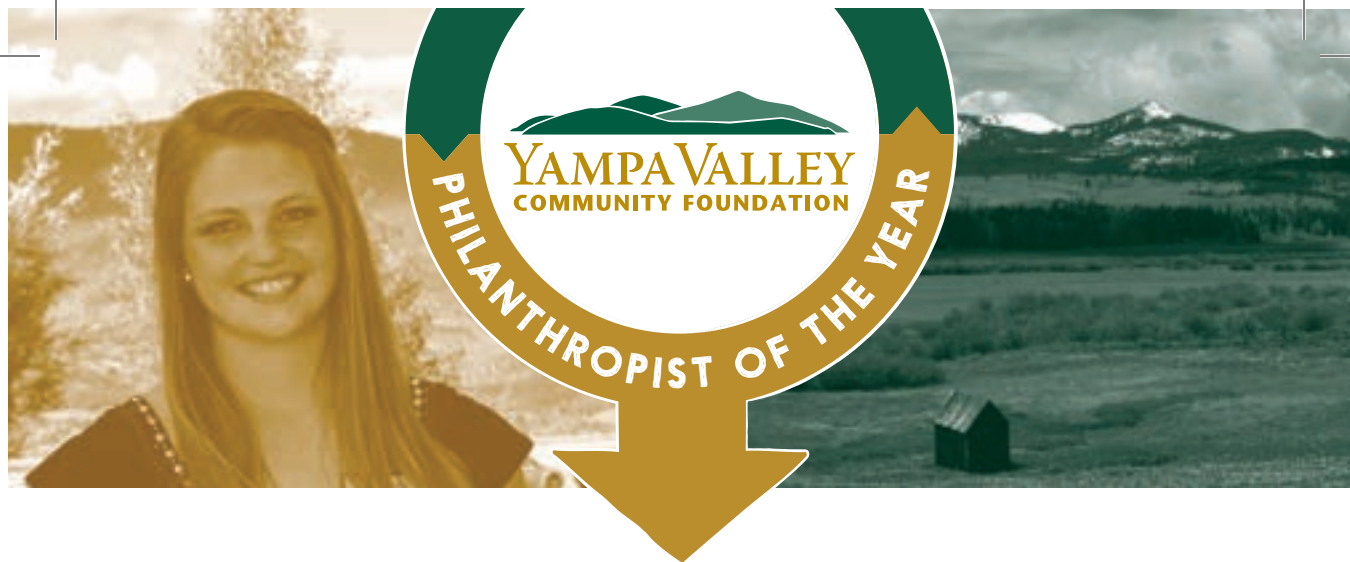
## What additional perks come with being a Passport Club Member?

ONE  
**Transferable Medallion**

- OR -

TWO  
**Season Ski Passes**  
to the Steamboat Ski Area

- Members-only locker room in Gondola Square
- Convenient parking
- Four days of skiing at both Winter Park and Copper Mountain
- Discounted Friends and Family passes
- First Tracks vouchers preloaded on pass
- Summer gondola use
- Invitations to Yampa Valley Community Foundation events



## What is the Philanthropist of the Year?

The Celebration of Philanthropy Award was established in 1998 to heighten visibility of giving in the Yampa Valley. The award honors an individual, business and youth who have exhibited significant charitable giving, insightful leadership and volunteerism, and who encourage others to contribute by example.

### Past Philanthropists of the Year

Year	Individual	Youth	Business
2015	Glen & Stephany Traylor	Jessica Rossi	BAP/Big Agnes/Honey Stinger
2014	Boyd Bass & Barbara Winternitz	Meg O'Connell	Creekside Café and Grill
2013	Rod & Vicky Hanna	Kayla Guettich	Yampa Valley Bank
2012	Verne & Nancy Lundquist	Jake Barker	Native Excavating
2011	Steve & Pam Williams	Anna Poirot	Central Park Liquor
2010	Sara & Michael Craig-Scheckman	Austin Ritzel	Steamboat Restaurant Group
2009	Tim & Janet Borden	Kayleigh Esswein	Holiday Inn
2008	Mary Brown	Megan Hanrahan	Smartwool
2007	Rick & Donna Garth	Nick Labor	Prudential Steamboat Realty
2006	Patti & Pres Askew	Katie Matteo	Steamboat Resorts
2005	Patty & John Kerst	Chantel Gregory	B&K Distributing
2004	Susan & Jim Larson	Tucker Louthan	Alpine Bank
2003	Poogie & Steve Dawes	N/A	Sheraton Steamboat Resort
2002	Lyman Orton	Jeff Fowler	Steamboat Motors
2001	Joy & Denny Swanson	Maggie McElhinney	Steamboat Pilot & Today
2000	Eliene & Don Lufkin	Emerald City Youth	Wells Fargo Bank
1999	Audrey & Bob Enever	N/A	TIC—The Industrial Company
1998	Gloria Gossard	Nathan Proper	Steamboat Ski & Resort Corp.





# 2014 AND 2015 HONOREES

Each year we pick an outstanding individual, youth and business to honor with the Philanthropist of the Year Award. These community leaders have shown an outstanding commitment to philanthropic values and a selfless determination to pass on their passion to our community.

## 2014 Honorees



### Individual

**Boyd Bass &  
Barbara Winternitz**

"We give so our community will be a better place."



### Youth

**Meg O'Connell**

"I give because I was given.  
I give because I love smiles."



### Business

**Creekside  
Café & Grill**

"We give because we believe in the community of  
Steamboat Springs and want to add to its success."

## 2015 Honorees



### Individual

**Glen & Stephany  
Traylor**

"We give because we want  
to be a part of the solution."



### Youth

**Jessica Rossi**

"I give because it's a simple way  
to make a difference."



### Business

**BAP, Big Agnes  
& Honey Stinger**

"We are very proud to be located in Steamboat and  
want to support the community that supports us."

Connecting People Who Care with Causes That Matter

## HOW TO GIVE

970.879.8632 | [yvcf.org](http://yvcf.org) | [info@yvcf.org](mailto:info@yvcf.org)





## Creating Opportunity



Through scholarship funds, you can support qualified students at an institution (college or technical school), students in a particular field of study, or students from a particular geographic area. You can choose to stay involved through an advisory relationship as a member of a selection committee, or allow the Community Foundation to award students based on your selection criteria. Either way, the Yampa Valley Community Foundation handles the necessary paperwork and ensures that scholarships are distributed in an equitable manner.

### Available Scholarship Funds



- Bill Michalek Scholarship
- Brad Bonner Memorial Scholarship
- Catamount Ranch & Club Scholarship
- Doak Walker Memorial Endowment Scholarship
- Eric Small Scholarship
- Everett Bristol Memorial International Scholarship
- George Tolles International Studies Scholarship
- Poogie Dawes Scholarship
- Routt County Cattlewomen Scholarship
- Ski Town USA Rotary Club Scholarship
- Steamboat Ski & Resort Corporation Scholarship
- Steamboat Springs Kiwanis/  
J. Scott Welles Memorial Scholarship
- Steamboat Springs Volunteer  
Firemen's Scholarship
- Steve Maloney Memorial Scholarship
- Louis and Wilma Rossi Family Scholarship
- Robert Welborn Scholarship
- Sam and Melissa Warner Scholarship
- The Dring Language Fellowship
- Monica Olson Veterinarian Scholarship
- William P. Spyker Memorial Scholarship



# SPOTLIGHT

**The Poogie Dawes Scholarship Fund** has, to date, provided almost \$50,000 to local female students. The scholarship supports graduating female high school seniors who demonstrate care and compassion for their community. YVCF caught up with Steve Dawes to learn about his experience in establishing a scholarship fund.

**YVCF:** Why establish a scholarship fund?

**Steve Dawes:** When Poogie passed unexpectedly over 9 years ago, we quickly decided that her support and commitment to public education at both the Steamboat Springs Middle and High Schools was where we wanted to “keep her spirit alive”. We established a scholarship for a female senior based on that person’s involvement with friends, family and the community.

**YVCF:** Tell us about your involvement in the Scholarship Fund.

**Steve:** We have a three person committee that I chair. After completing the initial review of applications, we conduct a conference call. With assistance from Danica Moss at the high school, we set up interviews with the finalists. I am proud to say that each and every year our decision has been unanimous.

**YVCF:** Are there challenges in the selection process annually?

**Steve:** I am truly amazed at the quality of female students at the High School and the challenge is to select just one recipient. In my mind, there are a number of applicants that are very qualified and are deserving of the award but there can only be one.

**YVCF:** What is your advice for others who seek to establish a scholarship fund?

**Steve:** I am passionate about the public school system. Scholarships play a very important role in a family’s ability to send their kids to college and we hope our scholarship helps ease that burden a little. This scholarship and the process we engage in keeps my wife’s memory and love of friends, family and community at the forefront of my life and that of my two sons. I would encourage others who might be considering a scholarship fund to speak with Danica Moss and Kevin Taulman at the High School to better understand the importance and significance of scholarships. Collectively, we are making a difference!

**YVCF:** Final Thoughts?

**Steve:** I realize that Poogie is still giving back to our community even though she is not physically with us. And that is what the Foundation and its donors are all about.

Connecting People Who Care with Causes That Matter

## HOW TO GIVE

970.879.8632 | [yvcf.org](http://yvcf.org) | [info@yvcf.org](mailto:info@yvcf.org)



Creating a Culture of Giving

HOW TO GIVE

970.879.8632 | [yvcf.org](http://yvcf.org) | [info@yvcf.org](mailto:info@yvcf.org)  
P.O. Box 881869 | Steamboat Springs, CO 80488